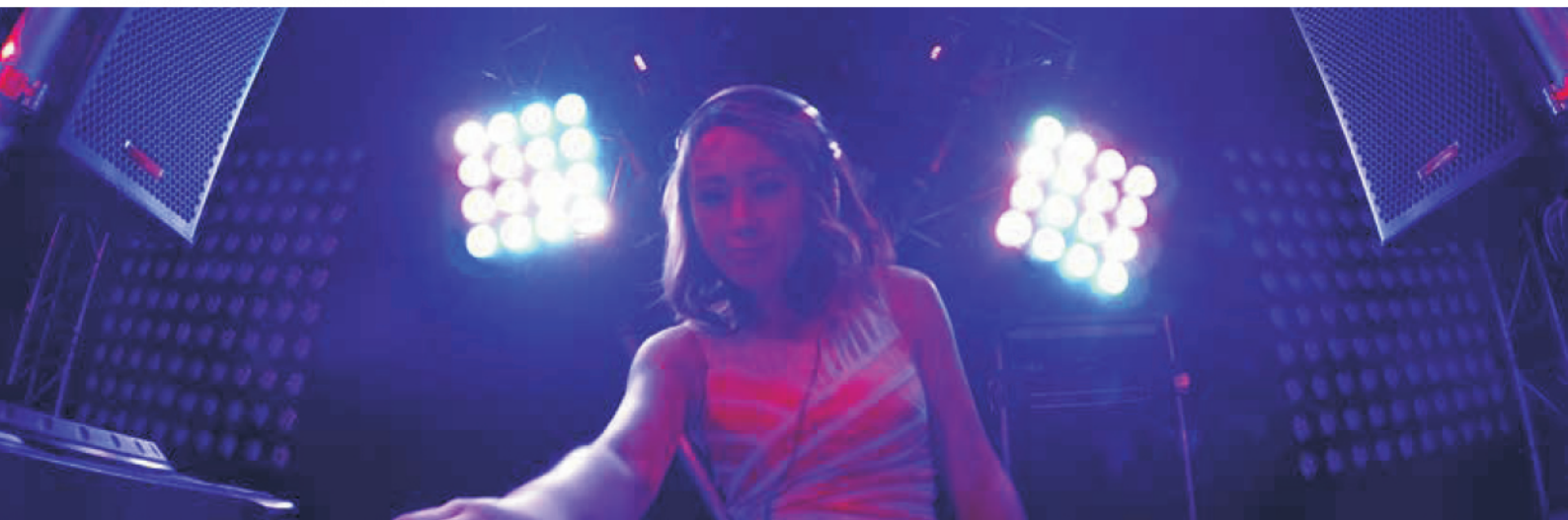




DOTZ MATRIX

1215200023



Specification

- Light Source: 16 X 30W COB Tri RGB LEDs in a 4x4 Matrix Panel
- Operational modes: DMX, Manual RGB Mode, Static Color & Sound Active
- DMX channels: 3,6,7, 48 or 52; 3 & 5 Pin In/Out
- Electronic Dimming: 0 - 100%
- Beam Angle: 60 degrees for wide coverage
- Built-In preset colors and programs
- 5 selectable Dim Curves (Standard, Stage, TV, Architectural & Theatre)
- Powercon AC IN/OUT; Daisy Chain up to 5 units @120V, 9 units @ 220V
- Power Draw: 430W Max; 3.91 Amps @120V, 1.95 Amps@220V
- Multi-voltage Operation: 100-240V, 50Hz/60Hz (auto sensing)
- Dimensions (LxWxH: 13.75" x 6.75" x 14.75"/ 345 x 170 x 370mm
- Weight: 18 lbs. / 7.8 kg.

RGB Color Mixing:



Photometric

Beam Angle 60°	R	2130	681	302	197	136	(LUX)
	G	3050	793	398	246	173	
	B	4730	1405	716	368	224	
	RGB	10140	1405	1360	730	476	
	Spot Diameter		2.65	3.75	4.90	6.05	

Field Angle 60°	R	974	270	114	66	45	(LUX)
	G	1444	405	185	109	71	
	B	2010	574	270	154	101	
	RGB	3370	1011	475	265	171	
	Spot Diameter		3.65	5.33	7.00	8.70	

