

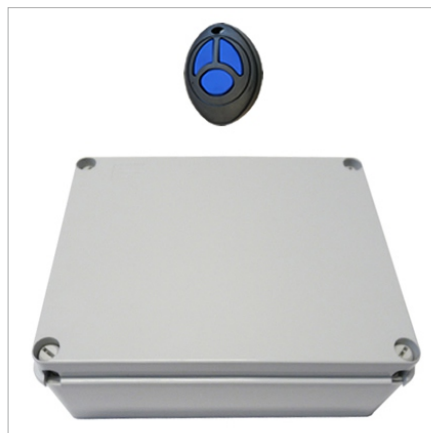
# RGB CONTROLLER

## WITH IR REMOTE CONTROL

### FOR LED LAMP ACQUA+LUX AND POLLUX



Controller unit for simultaneously managing the color change for AQUA + LUX COLOR and POLLUX RGB. Complete with IP56 box in ABS, additional antenna connection (included with 5mt cable) and radio remote control. It is already preset with luminous scenes to be selected via radio control. It is to be powered at 12 Vac with safety transformers. The maximum number of devices to which it is able to control depends on the power of the power supply transformer up to a maximum load of 300 W.



#### Accessories:

Power supply 220Vac/ 12Vac 300W

Power supply 220Vac/ 12Vac 100W



TECHNICAL SPECIFICATIONS	
Input voltage	12 Vac
Frequency	50-60 Hz
Electricity supply	25 A
Power consumption	300 W
Material	ABS
Dimension	200 x 155 x h80 mm
Weight	0,5 Kg
Electricity connection	Terminal Screw
Protection level	IP 56
Using temperature	-10 °C - +35°C
Insulating class	III class