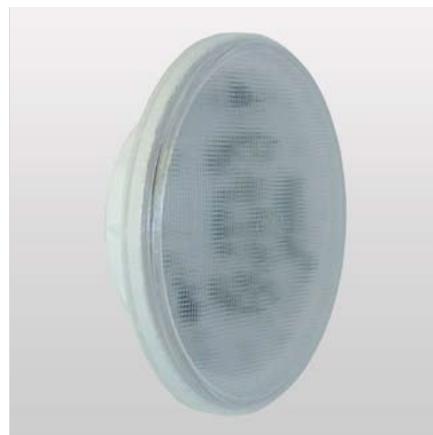


# PAR 56 ACQUA+lux COLOR for swimming pool



ACQUA+lux COLOR is able to ensure all the light power that your pool needs. The practicality and robustness of the materials guarantee maximum reliability, while the patented structure makes it completely immune to any infiltration. It works at 12Vac with the electromagnetic transformers already present in the lighting system of your pool, if sealed with a bicomponent Ip68 certification gel, also the lamp is guaranteed Ip68. It can be inserted in a standard ceiling lamp for PAR56, normally used for lighting swimming pools and fountains. Connection by screw clamps and sealed sealant. Accepts only AC power supply. Available as an accessory the control unit can simultaneously manage the RGB color change, preset with light scenes to be selected via radio control. Product designed and built in Italy.



## Accessories:

- RGB control unit with remote control
- Transformer 220Vac / 12Vac 300W
- Transformer 220Vac / 12Vac 100W
- Two-component insulating gel 1000ml
- Two-component 60ml insulating gel (for one lamp)

TECHNICAL SPECIFICATIONS	
Input voltage	12 - 15 Vac
Frequency	50-60 Hz
Electricity supply	2,5 A
Power consumption	30 W
Material	Polycarbonate
Dimension	Ø 178mm h = 65mm
Weight	0,35 Kg
Electricity connection	2 x screws M4
Protection level	Ip68
Using temperature	-10 °C - +40°C
Insulating class	III class
Beam angle	90°
Dimmerable	NO
Source	9 leds high lighting CREE
Colour temperature	RGB
Total emission	1015 lm
Brightness	370 lux @ 1 meter
Impact resistance	Ik07 2.00 Joule
Installation advice	1 x 18mq

