

FLAT U-PROFILE AU-02-10



Versions

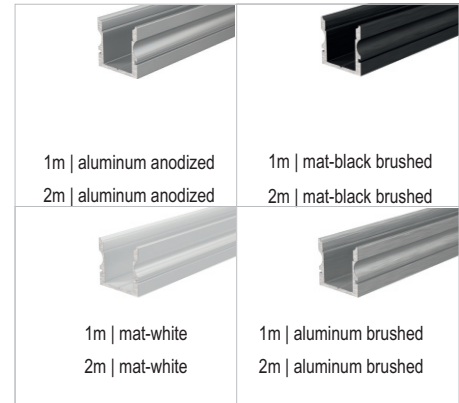
- 970120 - aluminum anodized, 1 m
- 970121 - aluminum anodized, 2 m
- 970122 - mat-black brushed, 1 m
- 970123 - mat-black brushed, 2 m
- 970124 - mat-white, 1 m
- 970125 - mat-white, 2 m
- 970126 - aluminum brushed, 1 m
- 970127 - aluminum brushed, 2 m

Application

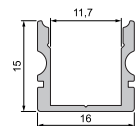
- for LED lighting with rigid and flexible strips up to 21,3 mm
- for the illumination of interior spaces
- for indirect and accent lighting
- for architecture, wall, ceiling, floor, furniture, kitchen, display, shelves, fairs, advertising

Features

- small in size
- easy installation
- can be easily shortened by own work
- high quality modern and timeless design
- protection of LED Stripes by external influences
- homogeneous lighting effect, no dazzle with
- passive cooling of the LED strips
- continuous quality control, high quality aluminum



unit: mm



Similar Variants (on request)

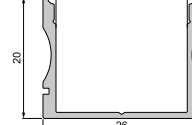
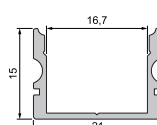
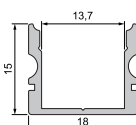
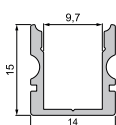
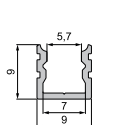
AU-02-05

AU-02-08

AU-02-12

AU-02-15

AU-02-20



Accessories for profile AU-02-10

	cover			end caps		
P - 01 - 10 plane	95% clear 983010 1m 983011 2m	75% mat 983012 1m 983013 2m	40% milky 983014 1m 983015 2m	white 978050	grey 978051 set, 2 pieces	black 978052
F - 01 - 10 fat	95% clear 983510 1m 983511 2m	75% mat 983512 1m 983513 2m	40% milky 983514 1m 983515 2m	white 978550	grey 978551 set, 2 pieces	black 978552
H - 01 - 10 high		75% mat 984012 1m 984013 2m	40% milky 984014 1m 984015 2m	white 979020	grey 979021 set, 2 pieces	black 979022
R - 01 - 10 round		75% mat 984512 1m 984513 2m	40% milky 984514 1m 984515 2m	white 979520	grey 979521 set, 2 pieces	black 979522
L - 01 - 10 lens	95% clear beam angle 45° 985010 1m 985011 2m			white 980010	grey 980011 set, 2 pieces	black 980012

fixation clamp - 10: set, 2 pieces



907004