

THREE-PHASE SQUARE TRACKS



Our square electric tracks are systems of three-phase tracks, namely with three circuits on the same line, for ceiling applications and suspended, suitable for different environments such as museums, shops, flats, offices and much more. The possibility to place these tracks in different schemes, without modifying the original system, can satisfy every lighting need. Moreover the lighting points can be increased, in order to be adapted to every lighting change. Mains voltage 230/250V – maximum 16 Ampere.

These systems include a wide accessory range, linear, angular, T, crossed and flexible connectors, which allow the match of more than one electric track.

The continuity (among each element) of the earthing system is very important in order to have a correct installation of all accessories which contribute to the three-phase track composition. The earth conductors of each component must be placed consequentially.

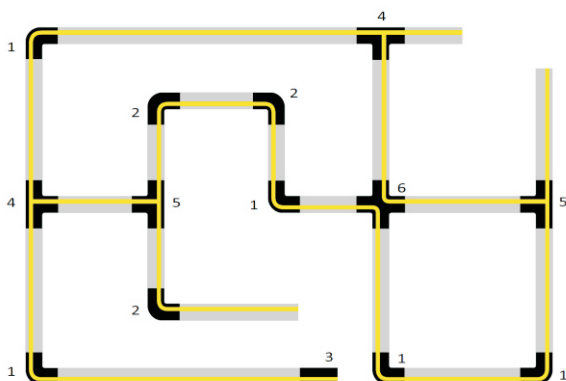
The square three-phase tracks are available in two lengths (1 or 2 meters) and in three colours (black, white or mat-silver).

Models:

- 555100 1 meter / black
- 555101 1 meter / white
- 555203 1 meter / mat-silver

- 555200 2 meters / black
- 555201 2 meters / white
- 555202 2 meters / mat-silver

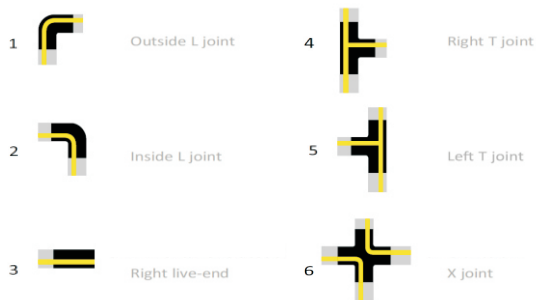
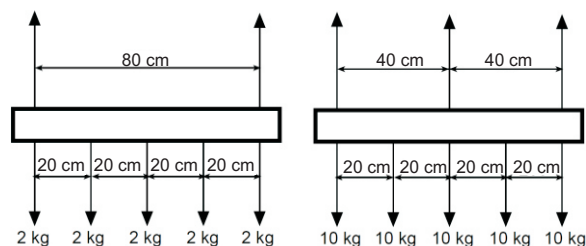
220- 240V	MAX 3x16A	34 mm H 42 mm B
--------------	--------------	--------------------



Live end with earth on the left L

Live end with earth on the right R

LOAD CAPACITY



ACCESSORIES



feeder

555520	black	earth right
555521	white	earth right
555510	black	earth left
555511	white	earth left



90°-angle with feeding possibility

555670	black	earth outside
555671	white	earth outside
555680	black	earth inside
555681	white	earth inside



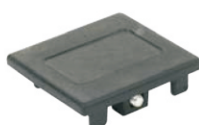
X-connector with feeding possibility

555690	black
555691	white



flexible connectors

555580	black
555581	white



endcap

555590	black
555591	white



T-connector with feeding possibility

555630	black	earth left
555631	white	earth left
555640	black	earth right
555641	white	earth right



straight connector with feeding possibility

555660	black
555661	white



stud bolt

144988	black
144989	white



outlet | max. 2300W

445701	black
445700	white



ceiling fixation

555693	rail holder
--------	-------------



electric straight connector

444560	black
444561	white



wire suspension 2m

444800	black
444801	white



rail cover 1m

444960	black
444961	white



adapter for spotlight mounting max. 6A

445020	black
445021	white