

# Mosaico FX100FC

Image projector with dual animation wheel and 1 gobo/color slot, 100W RGBW LED source



**Mosaico FX100FC** is an 100W RGBW Full Color LED IP66 image projector, engineered to be the modular platform to add building blocks to design your creative architectural lighting landscape.

**Mosaico FX100FC** is supplied with two controllable effect wheels on board made in structured glass material to animate your projection, with linear motion control for creating reflected water, blowing fire or northern lights effects. The kit contains also one indeaxable gobo holder and a colour holder both with magnetic attachment.

**Mosaico FX100FC** is compatible with a wide range of high definition optics, each optimized for the required application (animation or image projection): 15°, 30°, 50° and 70°.

This unit can be controlled via DMX, both wired and wireless and also easily operated locally through the simplified stand alone operations.

Please note that **Mosaico FX100FC** do not ship with a lens or other images or colors. Choose from the available lenses when ordering to meet your design requirements.

## MAIN FEATURES

- 100W RGBW LED Source Image and Effect light projector
- 15°, 30°, 50° and 70° available optics (not included), Image or Effects optimized
- DMX, CRMX Wireless and local stand alone control

## VERSIONS

Code	Housing
<b>MOSAICOFX100FCGY</b>	Gray
<b>MOSAICOFX100FCBK</b>	Black

## TECHNICAL SPECIFICATION

### LIGHT SOURCE

- Source:100 W RGBW / FC LED
- Luminous flux:(15°) 1'212 lm; (30° - WT) 1'214 lm; (30° - GB) 1'132 lm; (50° - WT) 1'340 lm; (50° GB) 896 lm; (70°) 960 lm @full
- Lux:(15°) 633 lx; (30° - WT) 392 lx; (30° - GB)0 165 lx; (50° - WT) 179 lx; (50° GB) 74 lx; (70°) 92 lx @5 m full
- Source life expectancy: > 30.000 hrs (L70B10 @Ta 25° C / 77° F)

### OPTICS

- Optics:interchangeable - see available accessories

- Focus: manual

### COLOUR SYSTEM

- Colour wheel: included 1 color holder accessory for 1 color (color not included)
- Colour wheel: optional color wheel with 5 colors included on board (see available accessories) - included colors Light Orange, Light Green, Yellow, Aquamarine, Pink

### DYNAMIC EFFECTS

- Control Resolution: 16-bit dimmer, colours
- Animation wheel: included 2 interchangeable wheels with indexing and CW and CCW rotation with variable speed (see available accessories)
- Rotating gobos: included 1 gobo holder with manual adjustable index position system for 1 gobo (gobo not included - see available accessories)
- Gobo size (BW):outer: 26,9 mm - image: 22 mm
- Gobo size (Color):outer: 26,9 mm - image: 20,5 mm
- Fixed gobos: optional gobo wheel for 5 gobos + open (gobos not included - see available accessories)
- Static mode: selection of static dimmer, colors and effects rotation mode

### BODY

- Body: weatherproof IP66 construction
- Body colour: RAL 9006 or RAL 9004
- Other:Inspectable cover window for effects and gobo replacement and maintenance

### CONTROL

- Protocols: DMX512, RDM, CRMX + WDMX, 3 push encoder
- Stand Alone:3 push encoder
- DMX channels:13 channel
- Wireless Control: included, LumenRadio Timo Fx DMX/RDM compatible with both CRMX (Lumen Radio) and W-DMX (Wireless DMX)
- RDM: RDM for remote monitoring and settings
- Display: user interface through DATAMASTER external coder (not included)
- Firmware upgrade: yes, via USB - DMX interface (UPBOX2) not included
- Master/Slave: for synchronised operation of more units linked in a chain

### ELECTRONICS

- Dimmer: linear 0 ~ 100%, electronic and manual knob dimmer
- Dimmer curves: selectable dimming modes available
- Strobe / shutter:1-30 Hz, electronic
- Operating temperature: -20° C / +45° C (-4° F / +113° F)
- LED Control: flicker free frequency with adjustable PWM
- Selectable PWM: 600 ~ 25.000 Hz

### ELECTRICAL

- Mains power supply: 100-240V - 50/60Hz
- Max power consumption:120 W
- Output (at 230V):25
- Power factor:>0.95

### PHYSICAL

- IP rating:66 for outdoor installations
- Cooling: active, silent operation
- Suspension and fixing: bracket for hanging and positioning
- Adaptors: XLR and BARE END 16A adaptors included
- Signal connection:35 cm moulded IP signal IN/OUT connectors
- Power connection:35 cm moulded IP power IN/OUT connectors
- Dimensions (WxHxD):224x261x221 mm
- Weight:5,8 kg

### CERTIFICATIONS / APPROVALS

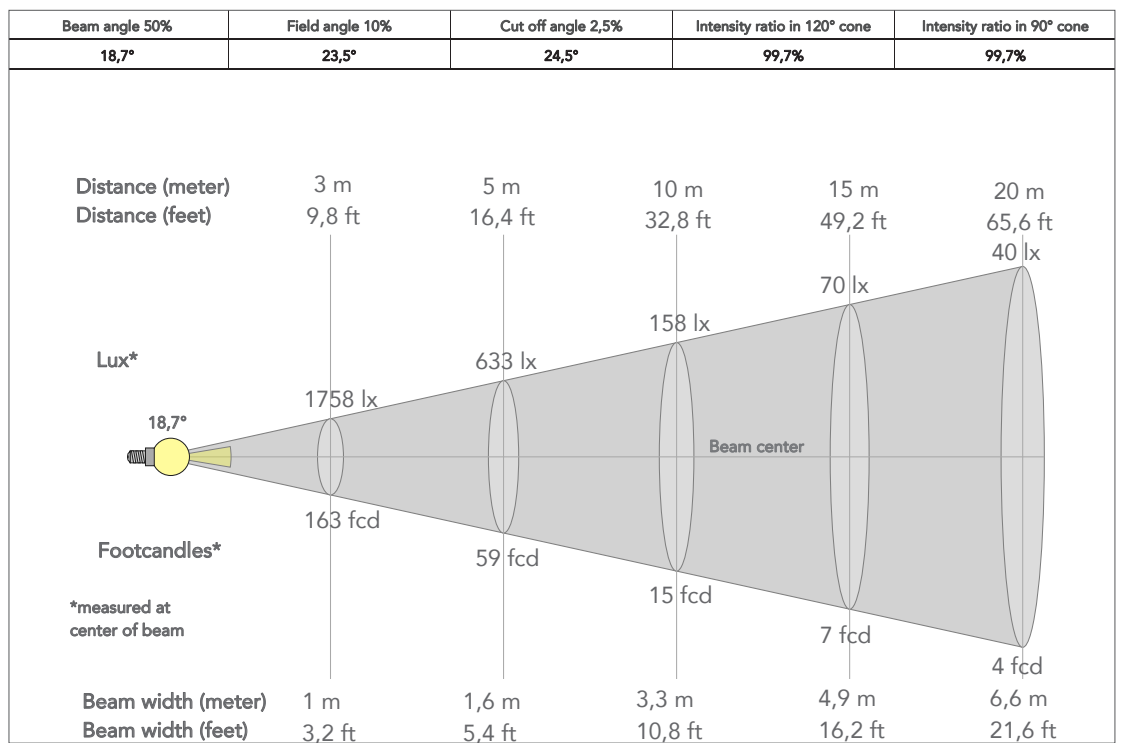
- Certifications / Approvals: CE, UKCA, RCM

## ACCESSORIES & RELATED PRODUCTS

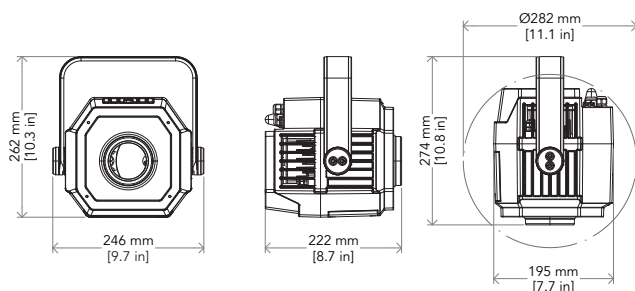
▪ MFX100BAG1U	Pelican case for 1 pc of MOSAICOFX100	▪ MFX100GH	Gobo holder for MOSAICOFX100 serie (gobo not included) with manual indexing
▪ MFX100WBRAKGY/BK	Wall bracket for MOSAICOFX100, grey/black housing	▪ MFX100CH	Color holder for MOSAICOFX100 serie (color not included)
▪ MFX100FBRAKGY/BK	Floor bracket for MOSAICOFX100, grey/black housing	▪ MFX100SNOOT BK/GY	Snoot for MOSAICOFX100 serie grey/black colour
▪ MOSUNIBRACKJR	Bracket for MOSAICOJR for wall mounting and suspension on poles	▪ MFX100SNOOTPROT BK/GY	Anti tampering full snoot with front glass grey/black colour
▪ MFX100LWGN	15° lens for MOSAICOFX100 series, narrow for water effect and gobo	▪ AWEXAC12ADP	Power adapter from AWEXAC1 cable series to AWEXAC2 cable series
▪ MFX100LWGVV	70° lens for MOSAICOFX100 series, very wide for water effect and gobo	▪ AWEXDC1221ADP	Signal adapter kit from AWEXDC1 series to AWEXDC2 series and vice versa
▪ MFX100LWTM	30° lens for MOSAICOFX100 series, medium for water effect	▪ AWEXAC1L03/05/10/20	IP67 power extension cable for outdoor architectural projectors, L.03/05/10/20 m
▪ MFX100LWTW	50° lens for MOSAICOFX100 series, wide for water effect	▪ AWEXDC1L03/05/10/20	IP67 DMX extension cable for outdoor architectural projectors, L.03/05/10/20 m
▪ MFX100LGBM	30° lens for MOSAICOFX100 series, medium for gobo	▪ UPBOX1UP5	Firmware uploader kit, USB IN, 5pin XLR DMX OUT, USB OUT
▪ MFX100LGBW	50° lens for MOSAICOFX100 series, wide for gobo	▪ C6002B	Slim aluminum clamp, 200kg loading, 48-51mm tubes, M10 bolt, Black
▪ GBVFX100120F06	Cyan filter with white stripes for MOSAICOFX100	▪ RSR1235B	Steel security cable for hanging bodies, inox steel shackle, L=120 cm, black
▪ GBVFX100220F03	Red filter with white stripes for MOSAICOFX100	▪ LRLUNA	Single Universe DMX transceiver with Bluetooth
▪ GBVFX100320F04	Green filter with white stripes for MOSAICOFX100	▪ LRAURORA	Single Universe DMX/RDM transceiver with WiFi and Bluetooth
▪ MFX100RAINW	Structured glass RAIN effect animation wheel	▪ MFX100AW	Animation wheel for MOSAICOFX100 serie
▪ MFX100HAMMERHEADW	Structured glass HAMMERHEAD effect animation wheel		
▪ MFX100D35C	Color for MFX100CH for MOSAICOFX100, 34,5 mm d. (RED, GREEN, BLUE, CYAN, MAGENTA, YELLOW, PINK MARINE, LIGHT ORANGE, LIGHT GREEN)		
▪ MFX100WE1	Water effect wheel for MOSAICOFX100 series, short axis 1		
▪ MFX100WE2	Water effect wheel for MOSAICOFX100 series, long axis 2		
▪ MFX100GW	Gobo wheel for MOSAICOFX100 serie (gobos not included)		
▪ MFX100CW	Color wheel for MOSAICOFX100 serie		

## PRESET FULL ON

Beam angle 50%: 15° LWGN



## TECHICAL DRAWINGS



## CERTIFICATIONS / APPROVALS

