

CE, RoHS

- IP65 Front
- IP65 Rear
- 200 ÷ 240Vac
- 40W
- SMD LED
-
-
-
- White frame
- Aluminium+PC
- 10°C
+40°C
- 50000 h (L80B20)
- Weight 4 Kg



cod. PNL0141-WW (3850 lm)
Temp. Col. 3000 K Warm white

cod. PNL0141-NW (3985 lm)
Temp. Col. 4000 K Natural white

UGR
≤ 19

CRI
≥ 80

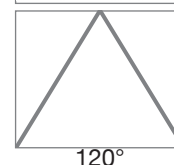
Photobiological
Safety
Gr "0"

LED
120 lm/W

Questo dispositivo è
munito di lampade
a LED integrate

A+
A+
A

LED

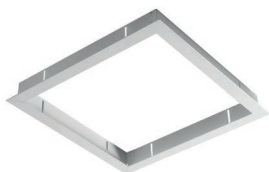


Agena IP65 LED is a waterproof 60x60 LED panel, with included power supply, easily inserted into ceilings, equipped with quick connection without the need for opening the device. The latest generation LEDs used have resulted in a luminous efficiency and excellent quality of the light in only 14 mm thickness, that it can be used instead of the classic 4x18W fixtures with fluorescent tubes. Its LED light source ensures a comfortable visual effect, which is available with a colour temperature of 3000 K and 4000 K, providing a CRI>80. Agena LED is ideal for offices, shops, malls, hotels, health care facilities and for all environments that require uniform and constant in time anti-glare illumination.

Agena LED complies with all relevant CE rules, 2006/95/EC, 2004/108/EC, photobiological safety EN62471-2010 (Class "0", exempt). Fire resistance of front optical component V-0, 125°C ULE41613.

Code	Color Temp.	Range Input	Watt	PF	Lumen Out	Dimmer	CRI	UGR	LED Chip	Beam aperture	Material body	Material Diffuser	Insulating class	IP Rate	IK Rate
PNL0141-NW	4000 K	200+240Vac	40W	>90	3985 lm	//	Ra ≥80	<19	SMD LED	120°	Aluminium	PC	I	65	07
PNL0141-WW	3000 K	200+240Vac	40W	>90	3850 lm	//	Ra ≥80	<19	SMD LED	120°	Aluminium	PC	I	65	07

cod. APL1200
Sleeve for recessed installation
Size: 600x600x32mm
not included



cod. APL1100
Sleeve for ceiling installation
Size: 603x603x65mm
not included



cod. APNL1236
Kit sospensione
non incluso



cod. KBATT1236
Kit emergenza 3 ore
non incluso



cod. LP122424
Dim. driver DALI



cod. CO101-D1
DALI LUX sensor &
Push Dimmer

