

sonlite

Magic 3D Easy View

THE SUCCESS STORY



New! Through Ethernet
Through the USB DMX-IN interface

Magic 3D Easy View uses the newest 3D technologies and Sunlite software in this revolutionary lighting visualizer package. Simply connect your lighting control desk to our software via DMX or Ethernet. At home, at your office or at your client's you will virtually feel on stage !

The new visualizer !

Easy, Real-Time, Universal, Economical



THE INDUSTRY STANDARD

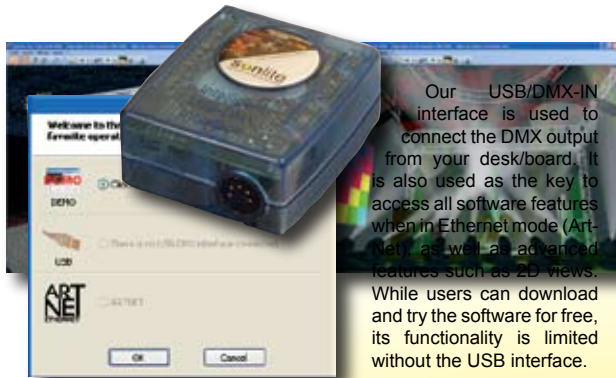


10 REASONS why you should choose the WORLD-LEADER

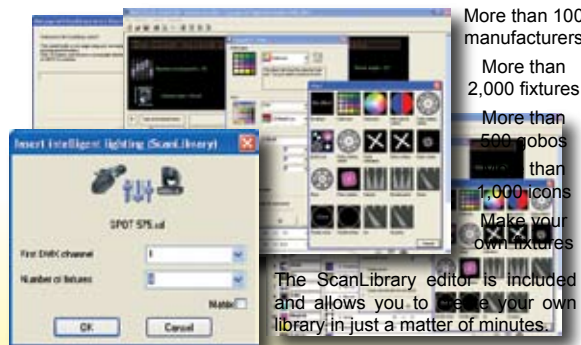
20 years' experience in lighting software, a team of 10 engineers.
Our sales multiplied x 5 over the past 5 years.
Distributed in 60 countries, software translated in 16 languages.
Brochures, advertising, mouse pads, posters, demo CDs, demo boxes ...
Powerful and user-friendly software tools, Easy View, Easy Step...
Inventor of best-selling USB/DMX interfaces, a world standard.
We supply the leading developers and manufacturers in the world. (OEM)
Our fixture-library is the most popular & widely-used among professionals.
"Sunlite Basic Edition", a marketing revolution in future.
Thousands of new enthusiastic Sunlite software users each year.



3D real-time visualization to program your shows from home or at work.
Using your favorite controller desk without any lighting fixtures.
Take still pictures or record videos of your stage and lighting effects.
Most economically accessible offline real-time 3D visualizer in the world.
New 2D views make it easier to build your stage and print reports.
Compatibility of the USB/DMX-IN interface with the Sunlite Suite 2006 package.
Communication with lighting console/desk through DMX or Ethernet.
Up to 4 DMX universes can be connected for real-time visualization.
Extensive objects libraries that include trusses, people, sound systems, etc...
or import objects from popular CAD software packages (3DS files)



Our USB/DMX-IN interface is used to connect the DMX output from your desk/board. It is also used as the key to access all software features when in Ethernet mode (Art-Net), as well as advanced features such as 2D views. While users can download and try the software for free, its functionality is limited without the USB interface.

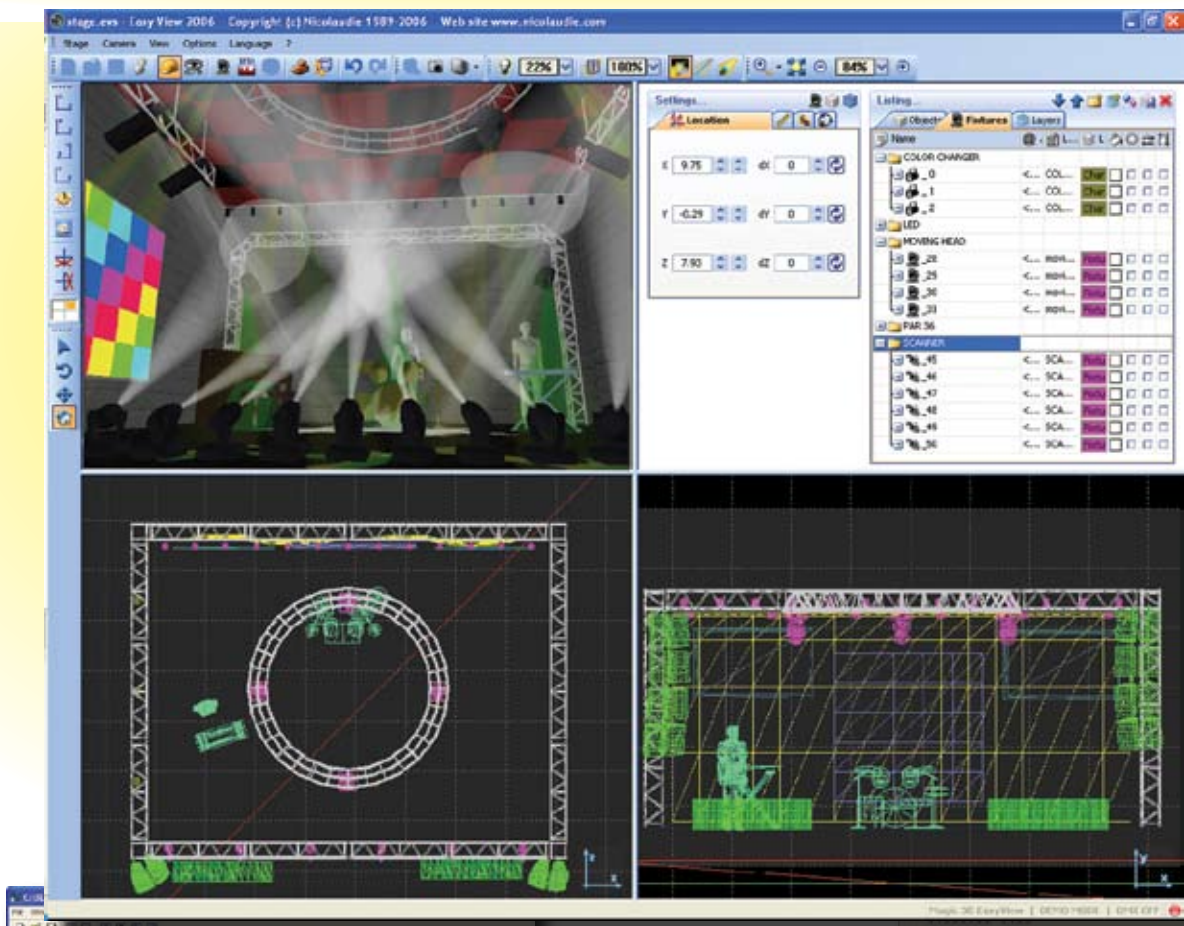


More than 100 manufacturers
 More than 2,000 fixtures
 More than 500 robots
 More than 1,000 icons
 Make your own fixtures

The ScanLibrary editor is included and allows you to create your own library in just a matter of minutes.

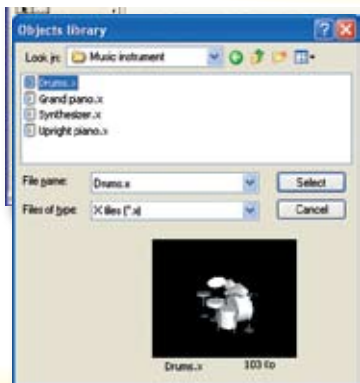
1 Start the software and select to read the DMX signal from USB or Ethernet

2 Insert your lighting fixtures and objects into your stage using our extensive libraries



3 Manage your objects: resize, move, rotate, duplicate, group, assign colors/textures

4 Unrestricted camera movement, capture still pictures, create movies ...



Color : Adjust color and transparency.
Size : Adjust size in units or percentage.
Location/Orientation : After selecting objects or folders in the list, change orientation or location in absolute and relative mode.
Folders : Arrange objects and folders by a simple drag & drop
Objects : Import objects from popular CAD packages (3DS files)

