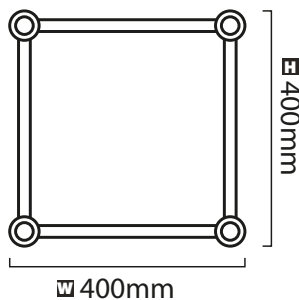
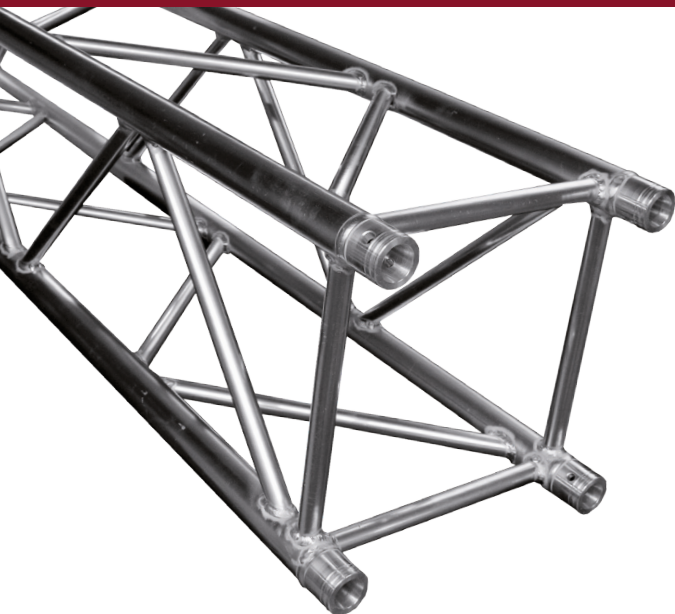


DT 44/4



Ø 50mm

DT44/4-050

Code: 1724200042 **L** 500mm **KG** 6,2

DT 44/4-100

Code: 1724200043 **L** 1000mm **KG** 10,9

DT 44/4-200

Code: 1724200044 **L** 2000mm **KG** 19,6

DT 44/4-300

Code: 1724200045 **L** 3000mm **KG** 28,7

DT 44/4-400

Code: 1724200046 **L** 4000mm **KG** 37,9

Compatible to DT 44 | DT 44/2 | DT 44/3

The difference in the DT 44/X series is the pipe wall thickness and the resulting load.

DT44/4 Tube diameter: 50mmx4mm (2 x 0.16 inch)

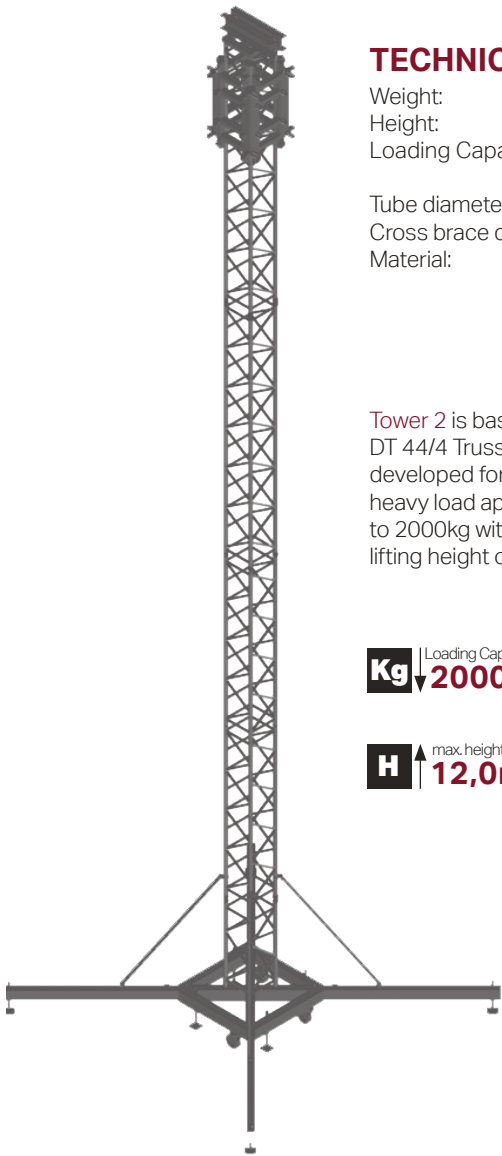


TECHNICAL DATA

Tube diameter: 50mmx4mm (2 x 0.16 inch)
Cross brace diameter: 25mmx3mm (1 x 0.12 inch)
Material: Alloy EN-AW 6082 T6 (AlMgSi1 T6)



TOWER 2



TECHNICAL DATA

Weight: 315kg
 Height: 12,0m
 Loading Capacity: 2000kg

Tube diameter: 50mmx4mm (2 x 0.16 inch)
 Cross brace diameter: 25mmx3mm (1 x 0.12 inch)
 Material: Alloy EN-AW 6082 T6 (AlMgSi1 T6)

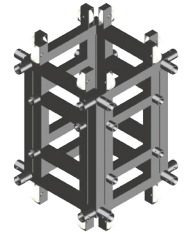
Tower 2 is based on our DT 44/4 Truss and is developed for medium and heavy load applications up to 2000kg with a maximum lifting height of 12m.

Kg Loading Capacity **2000kg**

H max.height **12,0m**

DT 44-SLEEVE

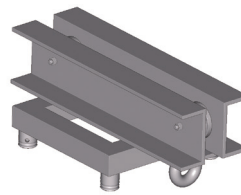
CODE: 1733000015



Sleeve Block for DT 44 & 44/4

DT44-TOP T2

CODE: 1733000016



Top Section for DT 44 & 44/4

DT 30/40-HC+10MM

CODE: 1749000015



for DT 31 -> 44
 for DT Sleeve Block, with thread M12

DT HINGE SECTION

CODE: 1749000009



DT 44-STEEL BASE

CODE: 1733000017



Steel Base Section for DT 44 Series

Part list:

TOWER 2

Code: 1733000014

PC.	Model	Code
1	DT 44-Steel Base	1733000017
1	DT 44-Sleeve	1733000015
1	DT 44-Top T2	1733000016
4	DT Hinge Section	1749000009
4	DT LO-B44	1733000041
1	DT 44/4-100	1724200043
4	DT 44/4-200	1724200044
1	DT 44/4-300	1724200045

DT LO-B44

CODE: 1733000041



Long Outrigger with Assist Arm