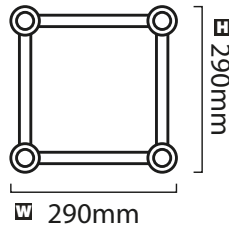
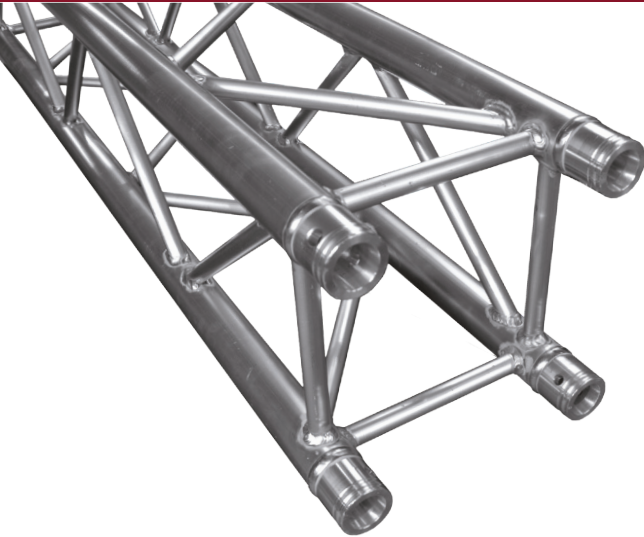


DT 34/4



∅ 50mm

DT 34/4-050

Code: 1724100037 **L** 500mm **KG** 5,9

DT 34/4-100

Code: 1724100038 **L** 1000mm **KG** 8,2

DT 34/4-150

Code: 1724100039 **L** 1500mm **KG** 14,1

DT 34/4-200

Code: 1724100040 **L** 2000mm **KG** 4,5

DT 34/4-250

Code: 1724100041 **L** 2500mm **KG** 5,5

DT 34/4-300

Code: 1724100042 **L** 3000mm **KG** 6,5

DT 34/4-350

Code: 1724100050 **L** 3500mm **KG** 7,5

DT 34/4-400

Code: 1724100048 **L** 4000mm **KG** 8,4

Compatible to DT 34 | DT 34/2 | DT 34/3

The difference in the DT 34/X series is the pipe wall thickness and the resulting load.

DT34/4 Tube diameter: 50mmx4mm (2 x 0.16 inch)



LOAD CHART - EN-1090 - EUROCODE

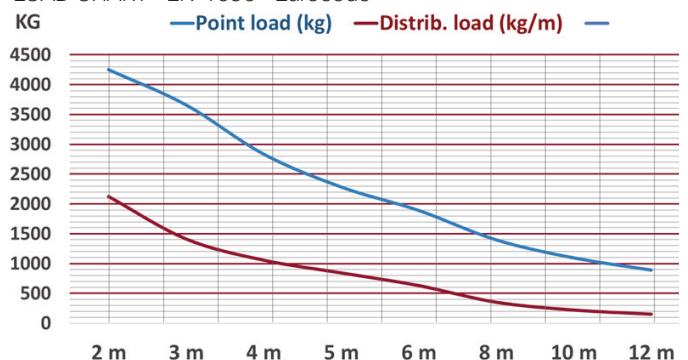
Length (m)	2 m	3 m	4 m	5 m	6 m	8 m	10 m	12 m
Point load (kg)	4255	3663	2838	2286	1893	1399	1097	892
Deflection (mm)	3,1	8,9	16,4	25,9	37,2	66,1	103,1	148,2
Distrib. load (kg/m)	2128	1414	1058	844	631	350	219	149
Deflection (mm)	1,9	6,4	15,3	29,8	46,4	82,1	127,6	182,7

TECHNICAL DATA

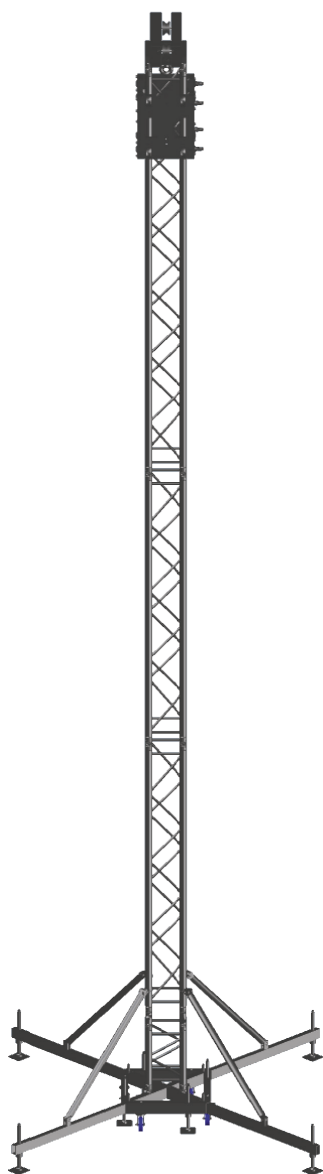
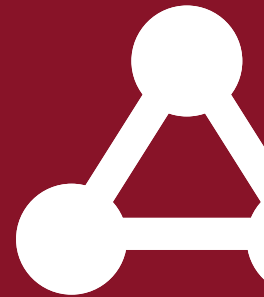
Tube diameter: 50mmx4mm (2 x 0.16 inch)
 Cross brace diameter: 20mmx2mm (0.8 x 0.08 inch)
 Material: Alloy EN-AW 6082 T6 (AlMgSi1 T6)



LOAD CHART - EN-1090 - Eurocode



TOWER 1



TECHNICAL DATA

Weight: 120kg
 Height: 7,5m
 Loading Capacity: 1000kg
 Base (extended) Ø: 2890mm

Tube diameter: 50mmx4mm (2 x 0.16 inch)
 Cross brace diameter: 20mmx2mm (0.8 x 0.08 inch)
 Material: Alloy EN-AW 6082 T6 (AlMgSi1 T6)

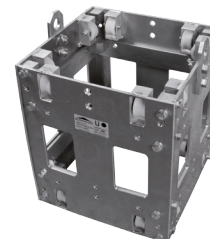
Tower 1 is based on our DT 34/4 Truss and is developed for medium load applications up to 1000kg with a maximum lifting height of 7,5m.

Kg ↓ Loading Capacity
1000kg

H ↑ max. height
7,5m

DT 34-SLEEVE

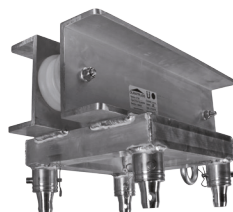
CODE: 1733000006



Sleeve Block for DT 34 & 34/4
L407mm **W**407mm **H**470mm

DT 34-TOP T1

CODE: 1733000004



Top Section for DT 34 & 34/4

DT 30/40-HC+10MM

CODE: 1749000015



for DT 31 -> DT 44
 for DT Sleeve Block, with thread M12

DT HINGE SECTION

CODE: 1749000009



DT 34-STEEL BASE

CODE: 1733000005



Steel Base Section for DT 34 Series
L617mm **W**617mm **H**210mm

Part list:

TOWER 1

Code: 1733000020

PC.	Model	Code
1	DT 34-Steel Base	1733000005
1	DT 34-Sleeve	1733000006
1	DT 34-Top T1	1733000004
4	DT Hinge Section	1749000009
4	DT LO-B34	1733000007
1	DT 34/4-050	1724100037
2	DT 34/4-200	1724100040
1	DT 34/4-300	1724100042

DT LO-B34

CODE: 1733000007



Long Outrigger with Assist Arm
 1000mm working length
 1170mm total length

DT SO-B34

CODE: 1733000013



Short Outrigger
 620mm working length
 79mm total length