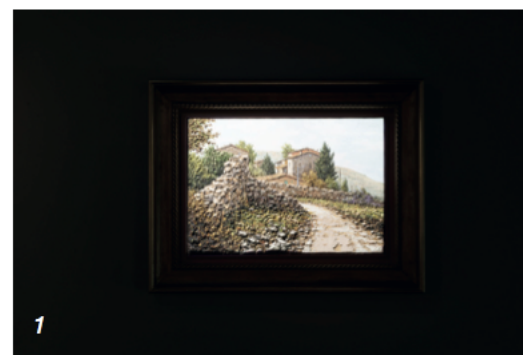
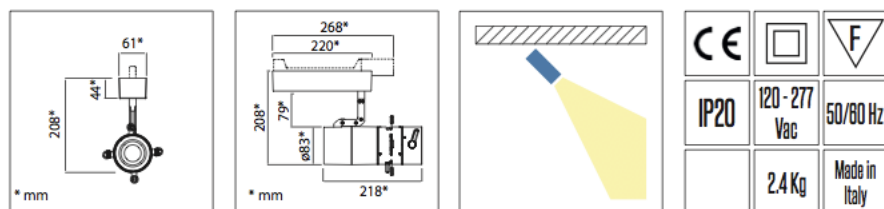


The APPLAUD is a LED SPOT light which not only has a GOBO holder, but also a beam shaper. The beam angle is fixed but can be selected from the following values: 16, 33 or 40 degrees. It is available either with a fixed color temperature light source (2700K, 3000K, or 4000K) or in a tunable white version (from 2900K to 5000K). The APPLAUD features remarkable versatility of use, since it can be used to illuminate paintings and works of art with a shaped beam, to project logos, gobos or images and to illuminate three-dimensional objects (such as statues) without generating shadows in the background. It is available in black or white finishing.

OPTICS: 16°, 33°, 40°  
 GOBO SIZE: OD: 37.5 mm - ID: 31 mm - THICKNESS: 1 mm  
 GOBO HOLDER: INCLUDED  
 4-BLADE FRAMING SYSTEM



1-2) Lighting precisely framed inside the picture frame to give greater depth to the painting

3) Venus de Milo: the statue is illuminated using custom-made gobos which reproduce the outline of the statue



SPECS	TUNABLE WHITE	FIXED WHITE
Light Source	LED Array	COB
Power Consumption	20W	30W
CCT	Tunable Range 2800K - 5600K	2700K, 3000K, 4000K
CRI	≥94	≥97
LED Luminous Flux	Min. 1000 lm Typical 1200 lm	Min. 2200 lm (@2700K) Min. 2250 lm (@3000K) Min. 2300 ml (@4000K)
Dimming Versions	Manual, DALI, Bluetooth	Manual, DALI, Bluetooth