

DT 31/2



50mm

∅ 50mm

DT 31/2-050

Code: 1724400001 **L** 500mm **KG** 0,7

DT 31/2-100

Code: 1721100001 **L** 1000mm **KG** 1,1

DT 31/2-150

Code: 1721100002 **L** 1500mm **KG** 1,5

DT 31/2-200

Code: 1721100003 **L** 2000mm **KG** 1,9

DT 31/2-250

Code: 1721100004 **L** 2500mm **KG** 2,3

DT 31/2-300

Code: 1721100005 **L** 3000mm **KG** 2,7

DT 31/2-400

Code: 1721100006 **L** 4000mm **KG** 3,5

DT 31/2-500

Code: 1721100007 **L** 5000mm **KG** 4,3



TECHNICAL DATA

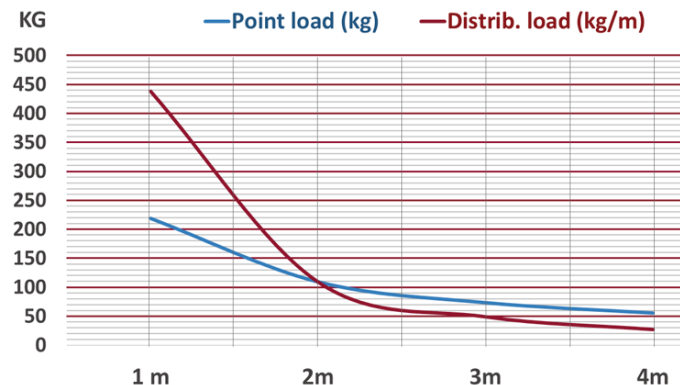
Tube diameter: 50mmx2mm (2 x 0.08 inch)
Material: Alloy EN-AW 6082 T6 (AlMgSi1 T6)



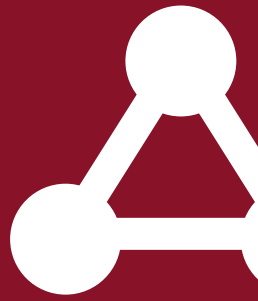
LOAD CHART

Length (m)	1 m	2m	3m	4m
Point load (kg)	219	109	73	55
Deflection (mm)	7,5	29,9	67,4	119,8
Distrib. load (kg/m)	438	109	49	27
Deflection (mm)	1,9	6,4	15,3	29,8

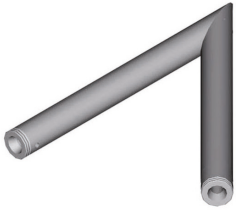
LOAD CHART



ONE TUBE SYSTEM



DT 31/2-L45
CODE: 1721200001



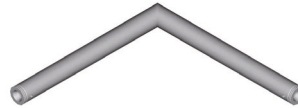
2 way corner 45°
L 500mm **W** 500mm **H** 50mm
α 45° **KG** 1,1

DT 31/2-L60
CODE: 1721200002



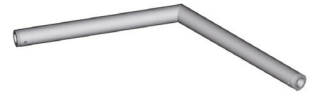
2 way corner 60°
L 500mm **W** 500mm **H** 50mm
α 60° **KG** 1,1

DT 31/2-L90
CODE: 1721200003



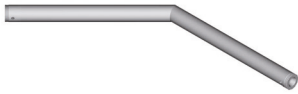
2 way corner 90°
L 500mm **W** 500mm **H** 50mm
α 90° **KG** 1,1

DT 31/2-L120
CODE: 1721200004



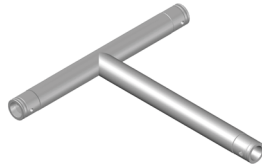
2 way corner 120°
L 500mm **W** 500mm **H** 50mm
α 120° **KG** 1,1

DT 31/2-L135
CODE: 1721200005



2 way corner 135°
L 500mm **W** 500mm **C** 50mm
α 135° **KG** 1,1

DT 31/2-T35
CODE: 1721200006



3 way T-joint
L 500mm **W** 500mm **H** 50mm
α 90° **KG** 1,1

DT CUBE 1
CODE: 1720000008



for DT 31 -> 44
L 50mm **W** 50mm **H** 50mm
KG 0,1

DT HC-CUBE 1
CODE: 1710000012



incl. M 10 bolt, pin, clip

DT BPS-4040
CODE: 1720000005



for DT 23 & DT 31
Material: steel | incl. half connectors
L 400mm **W** 400mm **H** 10mm
KG 1,2

DT 30/40-TERMINAL PIECE
CODE: 1749000008



for DT 31 -> 44

DT 30/40-CC
CODE: 1723400008



for DT 31 -> 44

DT 30/40-STEEL PIN
CODE: 1749000006



for DT 31 -> 44

DT 20/40-SAFETY CLIP
CODE: 1744000010



for DT 22 -> 44

DT 31/2-CIRCLE



Model Construction	Code	Number of parts:
DT 31/2-Circle Part-1m-360dgr	1721300001	1 circle is 1 part
DT 31/2-Circle Part-1,5m-90dgr	1721300006	1 circle is 4 parts
DT 31/2-Circle Part-2m-90dgr	1721300007	1 circle is 4 parts
DT 31/2-Circle Part-3m-90dgr	1721300008	1 circle is 4 parts
DT 31/2-Circle Part-4m-90dgr	1721300009	1 circle is 4 parts