

PROSTAGE



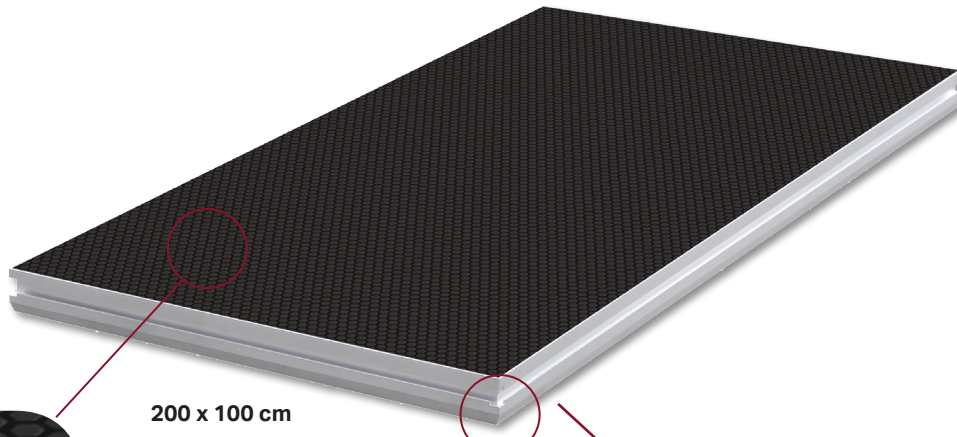
Kg Loading Capacity
500kg/m²

BLACK HEXA ANTI-SLIP SURFACE

29 KG LIGHTWEIGHT

OUTDOOR

DURASTAGE
PROFESSIONAL CONSTRUCTIONS®



200 x 100 cm



COMPATIBLE WITH ALL 9CM PROFILES

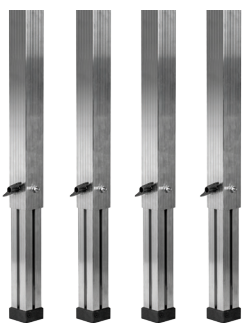


DS-PROSTAGE 200X100

CODE: 1711000000

200 x 100 cm

FLEXLEG SQUARE

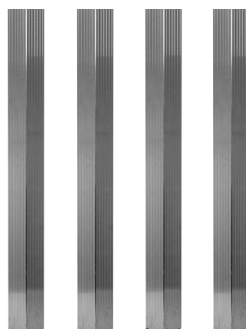


TAPE MEASURE ON EVERY FLEXLEG

- ADJUSTABLE
- TAPE MEASURES ON EVERY LEG
- HIGH DURABILITY
- EASY TO CONNECT

Model	Code
DS-PROSTAGE FLEXLEG Square 40-60cm	1711000027
DS-PROSTAGE FLEXLEG Square 60-100cm	1711000028
DS-PROSTAGE FLEXLEG Square 80-140cm	1711000029

LEG SET SQUARE



Model	Code
DS-PROSTAGE LEG SET Square 20cm	1711000035
DS-PROSTAGE LEG SET Square 40cm	1711000036
DS-PROSTAGE LEG SET Square 60cm	1711000037
DS-PROSTAGE LEG SET Square 80cm	1711000038
DS-PROSTAGE LEG SET Square 100cm	1711000039

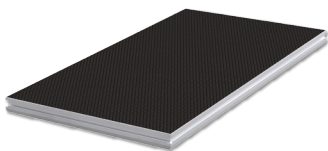
Prodotti commercializzati da:
AMLUX s.r.l.
46042 Castel Goffredo (MN)
info@amlux.it - www.amlux.it

A solid base for your performance DuraStage PRO-Stage platforms from DuraTruss are both lightweight and solid. With a TÜV-tested loading capacity of 500kg/m² (tested under ISO EN 14122), they are strong enough to bear massive loads for any kind of performance. The stages are designed to be used both as touring stages and in permanent installations. The universal aluminum profile with the module clamps allows for setup in seconds and the adjustable legs level any unevenness in the floor by the simple turn of a screw. The black anti-slip hexagon style surface is permanently waterproof to allow for outdoor use as well.

PROSTAGE

DS-PROSTAGE 200X100

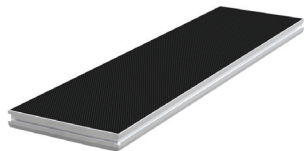
CODE: 1711000000



200 x 100 cm

DS-PROSTAGE 200X50

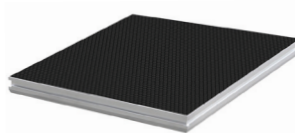
CODE: 1711000002



200 x 50 cm

DS-PROSTAGE 100X100

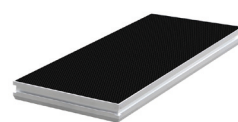
CODE: 1711000001



100 x 100 cm

DS-PROSTAGE 100X50

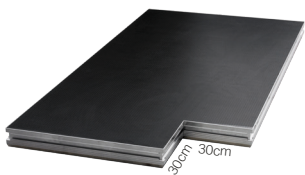
CODE: 1711000003



100 x 50 cm

DS-PROSTAGE 200X100 TRUSSCUT LEFT

CODE: 1711000058



200 x 100 cm trusscut - left

DS-PROSTAGE 200X100 TRUSSCUT RIGHT

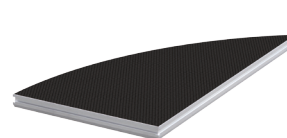
CODE: 1711000007



200 x 100 cm trusscut - right

DS-PROSTAGE 200X100 ROUND LEFT

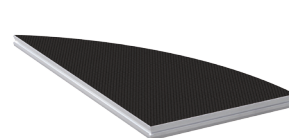
CODE: 1711000057



200 x 100 cm round - left

DS-PROSTAGE 200X100 ROUND RIGHT

CODE: 1711000059



200 x 100 cm round - right

DS-PROSTAGE 100X100 ROUND

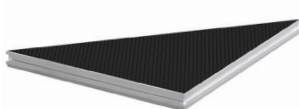
CODE: 1711000004



100 x 100 cm - round

DS-PROSTAGE 100X100 TRIANGLE

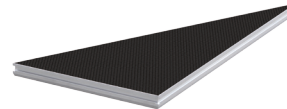
CODE: 1711000005



100 x 100 cm - triangle

DS-PROSTAGE 200X100 TRIANGLE L

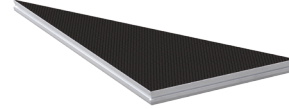
CODE: 1711000006



200 x 100 cm triangle - left

DS-PROSTAGE 200X100 TRIANGLE R

CODE: 1711000060



200 x 100 cm triangle - right

DS-RAIL TROLLEY

CODE: 1711000044



DS-STAGE TROLLEY

CODE: 1711000043



DS-PROSTAGE WHEEL LEG 40

CODE: 1711000040

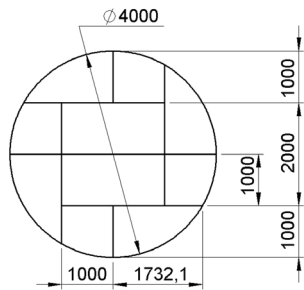


Prodotti commercializzati da
AMLUX s.r.l.
46042 Castel Goffredo (MN)
info@amlux.it - www.amlux.it

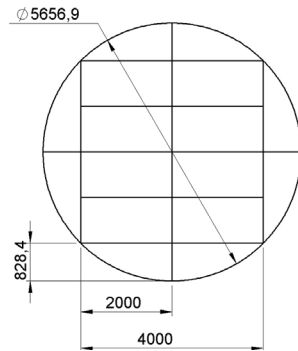
Dimensione: 40cm. Supplied
with Blue Wheel



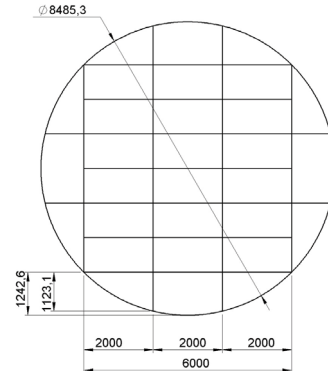
DS-PROSTAGE CIRCLE 4M



DS-PROSTAGE CIRCLE 5,5M



DS-PROSTAGE CIRCLE 8,5M



Part list:

Model
2x DS-PROSTAGE 200x100 Code: 1711000000
4x DS-PROSTAGE Circle 4m Part1 Code: 1711000050
4x DS-PROSTAGE Circle 4m Part2 Code: 1711000051

Part list:

Model
8x DS-PROSTAGE 200x100 Code: 1711000000
4x DS-PROSTAGE Circle 5,5m Part1 Code: 1711000052
4x DS-PROSTAGE Circle 5,5m Part2 Code: 1711000053

Part list:

Model
18x DS-PROSTAGE 200x100 Code: 1711000000
4x DS-PROSTAGE Circle 8,5m Part1 Code: 1711000054
4x DS-PROSTAGE Circle 8,5m Part2 Code: 1711000055
4x DS-PROSTAGE Circle 8,5m Part3 Code: 1711000056

DS-STAIR 2040

CODE: 1711000017



1st step 20cm, 2nd step 40cm

DS-STAIR 60

CODE: 1711000018



3th step 60cm

DS-STAIR 80

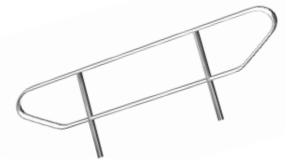
CODE: 1711000019



4th step 80cm

DS-PROSTAGE STAIRRAIL

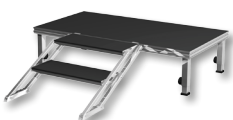
CODE: 1711000012



DS-ProStage Stairrail is the perfect Rail for all DS-Stairs. It fits to all Flex Stair except DS-Prostage Flexstair 40-60.

DS-PROSTAGE FLEXSTAIR 40-60

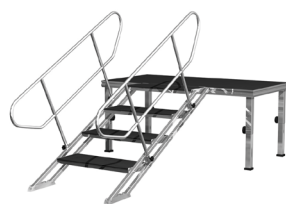
CODE: 1711000008



Flexstairs (40cm - 60cm)

DS-PROSTAGE FLEXSTAIR 60-100

CODE: 1711000009



60-100cm

DS-PROSTAGE FLEXSTAIR 80-140

CODE: 1711000010



80-140cm

DS-PROSTAGE FLEXSTAIR 100-180

CODE: 1711000011



100-180cm

Prodotti commercializzati da:
AMLUX s.r.l.
 46042 Castel Goffredo (MN)
 info@amlux.it - www.amlux.it

DS-PROSTAGE STAIRRAIL
 (1711000012) not included!

PROSTAGE

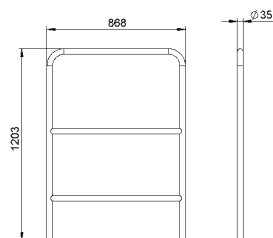


DS-PROSTAGE STAGERAIL 100

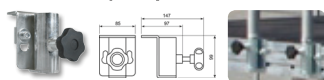
CODE: 1711000013



Stagerail 100
120,3cm x 868cm



Waga: 2.83kg



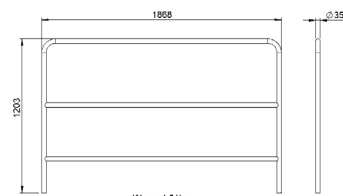
STAGERAIL including:
PROSTAGE STAGERAIL ADAPTER

DS-PROSTAGE STAGERAIL 200

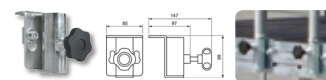
CODE: 1711000014



Stagerail 200
120,3cm x 1868cm



Waga: 4.51kg



STAGERAIL including:
PROSTAGE STAGERAIL ADAPTER

DS-PROSTAGE STAGERAIL CLAMP

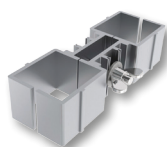
CODE: 1711000015



Clamp for
DS-PROSTAGE STAGERAIL 100 and
DS-PROSTAGE STAGERAIL 200

DS-PROSTAGE LEGCLAMP DUO

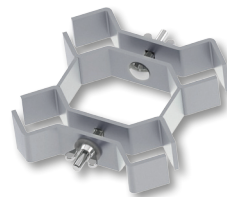
CODE: 1711000041



Legclamp duo

DS-PROSTAGE LEGCLAMP QUAD

CODE: 1711000042



Legclamp quad

DS-PROSTAGE CONNECTOR

CODE: 1711000021



Connector

DS-PROSTAGE STAGECLAMP

CODE: 1711000020



STAGECLAMP

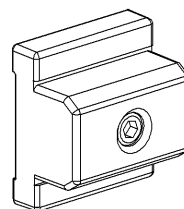
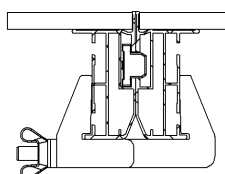
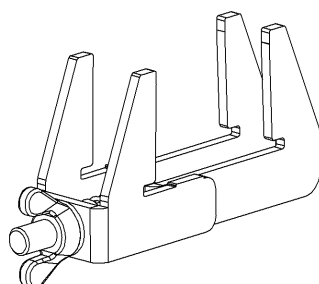
DS-PROSTAGE LEVELER

CODE: 1711000022



LEVELER

Mounting example:



Prodotti commercializzati da:
AMLUX s.r.l.
46042 Castel Goffredo (MN)
info@amlux.it - www.amlux.it