

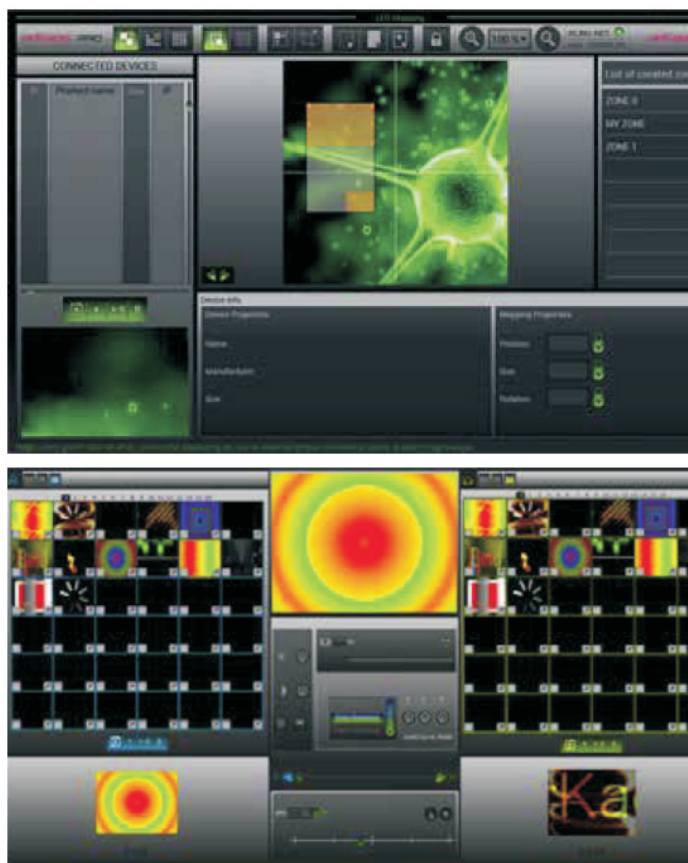
LED MASTER (Klingnet Software)

1310000026

LEDMaster is an all-in-one media solution that will allow you to create the most dynamic LED light shows. Based on our Kling-Net protocol, LEDMaster will take your LED light show to the next level. LEDMaster and KlingNet work together to do all the hard work for you, making operation simpler than ever. Kling-Net adds a layer of 'intelligence' to even the most simple LED devices, enabling it to talk directly with LEDMaster. This then enables the LED devices to configure themselves automatically, removing the need for complicated setup processes. KlingNet protocol is found imbedded in several ADJ and Elation fixtures, such as ADJ's Illusion Dotz 4.4, Illusion Dotz 3.3, Ultra Kling Bar 18, Flash Kling Panel 64 and Elation's EZ Kling interface, which can be used to run ANY LED pixel controllable DMX product. Designed in 3 steps, Mapping, Programming and Performance, LEDMaster is one of the most powerful and easy to use media softwares of its kind.

Features:

- Video control software for use with Kling-Net compatible LED fixtures
- Compatible with EZ-Kling box
- 3 Program Modes: Mapping mode; Scene Programming mode; Performance mode
- Mapping mode automatically recognizes Kling-net fixtures
- Scene programming mode allows for users to create scenes
- Performance mode allows for scenes to be triggered live
 - Auto-configuring with a large range of fixtures like Flash Kling Panel 64, Flash Kling Batten, Flash Kling Strip, Pixel Kling10C, Illusion Dotz 4.4 & 3.3, Asteroid 1200, all Pixel-controlled DMX-fixtures via EZ-Kling BOX, Ultra Kling Bar 18 and many others.



UC3 CONTROLLER

1321000046

The UC3 provides easy-to-use control of various American DJ lighting fixtures

- Mode Selection: Different run modes, e.g. fast/slow, audio/manual/ auto, position, latch, etc., correspond to different functions
- Function Selection: Implements a wide variety of effects, like strobe, X/Y moving pattern selection, gobo/ color changing, X/Y position setting, etc. Functions vary with different fixtures
- Cable length: Approx. 32 ft. / 9.75 mm
- Connection: 1/4 Stereo plug
- Dimensions: 3.54"x2.36"x.78" / 90x60x20mm
- Weight: 1 lbs. / .45 kgs.



UC3 Series easy-to-use lighting controllers are compatible with the following ADJ lighting fixtures:

Color Burst 8 DMX, Crazy 8, Dekker LED, Dotz Flood, Event Bar DMX, Event Bar Pro, Event Bar Q4, Freq 5, H2O DMX Pro, Inno Beam LED, Inno Color Beam LED, Inno Color Beam Quad 7, Inno Roll HP, Inno Scan HP, Inno Spot LED, Inno Spot Pro, Inno Spot Elite, Jelly Dome, Matrix Beam LED, Monster Beam, Quad Phase HP, Quad Scan Pro, Revo Sweep, SP-1500 DMX, Spherion Tri LED, Sweeper Beam LED, Sweeper Beam Quad, Vortex 1200, X-Move LED 25R

UNI PAK-MKII

1330000003

- Compact, 1 channel Dimmer/Switch Pack
- On-board and external HTP (Highest Takes Precedence) slider
- Standard DMX-512 protocol
- Dim preset - Dim limiter settings
- LED display makes it easy to set DMX channels
- 3 pin XLR In/Out
- Two standard AC 3-prong Edison plugs
- Easy to use mounting bracket
- Maximum power: 10A
- Dimensions (LxWxH): 7.25" x 3.625" x 2.625" / 184x92x92mm
- Weight: 3 lbs. / 1.3 kgs.

