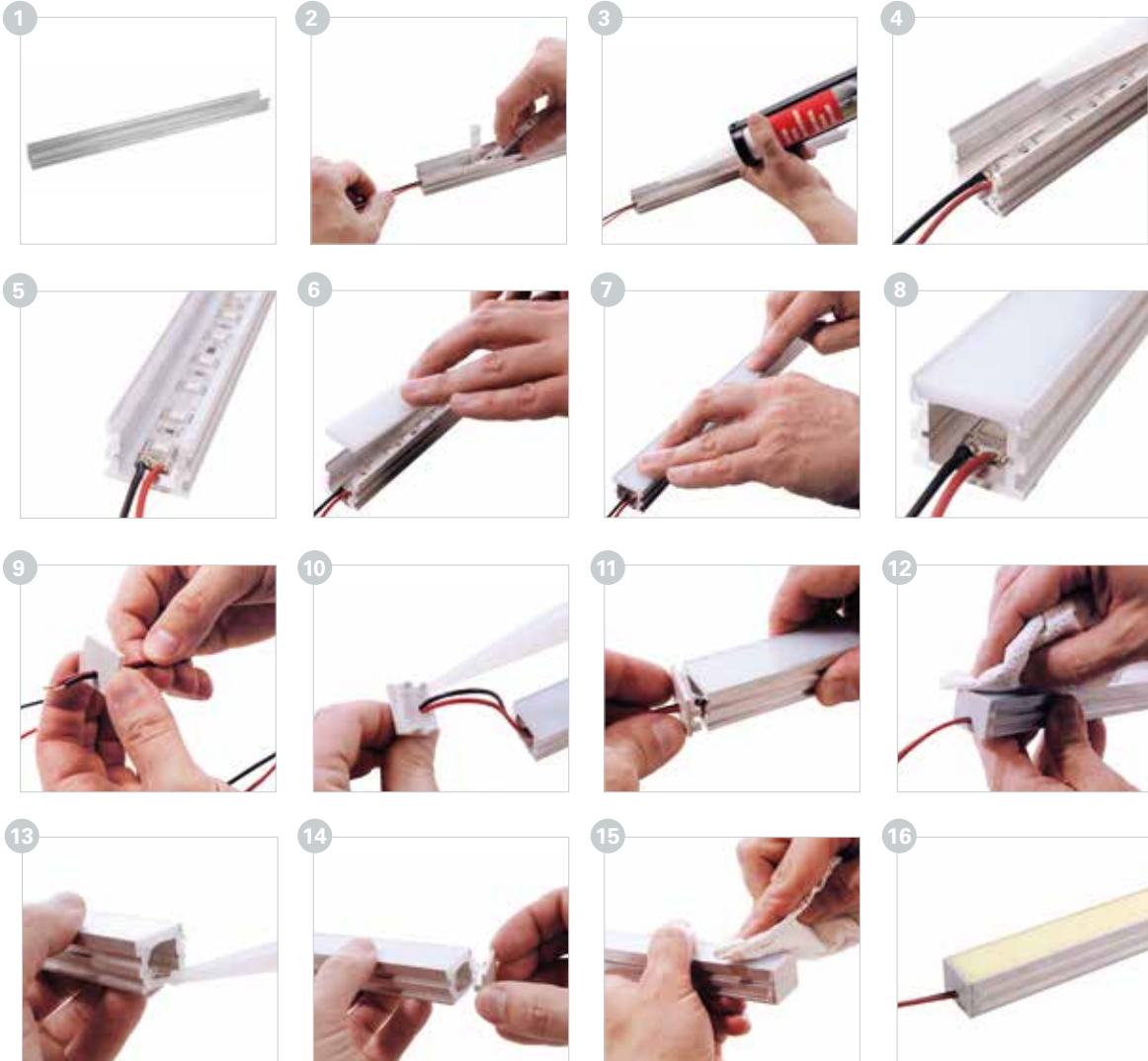


ALUMINUM PROFILES || IP-PROFILES



Caution! Please consider before mounting:

For an optimum and durable result, please consider the climate and weather effects before remounting.

Impact of sun:

Please consider the solar run before mounting. Permanent and intensive sun rays may damages the LED strip - also in switch-off condition. Each material expands and contracts again. Please remount the profiles under consideration of the temperature oscillations and the derived expansion coefficients. Beware that the materials such as Aluminum, PMMA, PC and Macrolon [Profiles/Covers] can expand significantly at temperature variations, which has an impact on the sealing. **This is not a product defect but a normal physical process.**

Impact of water and frost:

Please check before mounting that after the assembly of the profile in rainy weather, no standing water is formed. Strong condensation water may form in case of inadequate machining and different temperatures. Water may also penetrate due to capillary effects. Standing or penetrating water or humidity may have a great impact on the sealing during frost and damage the LED stripe. We recommend that for the protection of the LED stripes you pour the profile half empty or fully empty [according to the stress and usage].

Please be aware that we do not hold any liability for the machining or processing on your side, such as sealing positioning and application.

MOUNTING INSTRUCTION

- 1 for an optimal work surface the profile must be grease- and dust-free
- 2 For glueing place the LED stripe on one side and press carefully in vertical direction part by part
- 3 Once the LED stripes have been installed, the cover is glued
- 4 Apply a continuous regular layer of nature stone sealant/silicon transparently on the complete surface of the profile until
- 5 a continuous closed adhering surface is provided. The sealant must not present any open spaces.
- 6 Insert the conical cover loosely with the narrow side downwards smoothly into the profile
- 7 Press at one side on the cover with uniform regular vertical movements part by part
- 8 The cover must be flush with the profile start and end.
- 9 Conduct the connection cable by the end cap [a bore is made manually in the end cap]
- 10 For the sealing of the profile at the front sides, apply sealant around the end cap into the cable duct
- 11 Slide the end cap smoothly onto the profile
- 12 Remove all residual material/sealant and clean the surface
- 13 Repeat this procedure for the second end cap [Sealant can be applied on the end cap or on the profile with cover]
- 14 Slide the end cap on until it is completely inserted
- 15 Remove all residual material/sealant and clean the surface
- 16 After a correct and careful machining, always perform a function test before remounting to check whether the protection class up to IP65 was reached